

HIGH QUALITY VIBRANT IMAGES

SOLVENT SEMI-TAC ADHESIVE

CLEAR PET FILM

COMPATIBLE WITH SOLVENT, LATEX & UV INKS

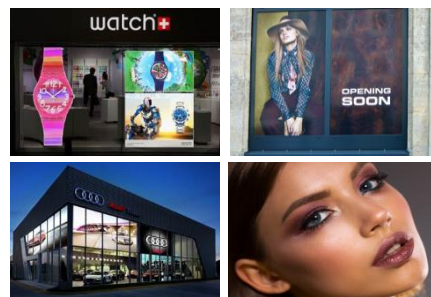
Product description

- An ultra-clear polyester film for window décor
- Removable semi-tac glue leaves no residue when removed
- Semi-tac adhesive has wide applications due to adhesion strength
- Ideal for reverse printing
- Clear glue and clear resin coating

Specifications

Length	30m	Inner Core	3" core
Weight	235gsm	Surface	Matte
Caliper	180µm / 7.2 mil	Base Material	PET

Uses



Retail Window Advertisements, Indoor Window Advertisements, Retail Identification Signs, Residential Interiors, Glass Partitions and Cubicles

Printing and handling

- Recommended conditions for use: 15~30°C / 30~60% humidity
- To optimize the printing quality, printer needs to be set for highest print quality
- Handle with gloves to avoid marks during printing
- Laminating is optional and can protect the image from physical damage and to decrease image-fading
- Allow image to dry completely prior to handling and laminating
- One year storage in original package under recommended temperature 10°~25°C, 30~ 50% RH

Application tips

- Not suitable for uneven surfaces
- Clean surface before applying
- Not recommended for outdoor use
- Wet mount recommended for larger applications

InkTec Europe

**Important information: It is the responsibility of the purchaser to test and determine the suitability of the material. Printer and ink change may affect results. Information provided here is subject to our test criteria and subject to change without prior notice. No media warranty is implied.*

01993 862770 | info@inkteceu.com | www.inkteceu.com