



**InkTec Co., Ltd.**  
98-12, Neungan-ro, Danwon-gu, Ansan-si, Gyeonggi-do, Korea 15426  
Tel +82 31 494 0001 Fax +82 31 492 2041 [www.inktec.com](http://www.inktec.com)



All brand names & trademarks are property of their respective owners.  
MEC-LF03A V.1.7 20190111

## DIGITAL INKJET FRONTIER

We, InkTec Co., Ltd., as one of the leading manufacturer in Korea, have been supplying various kinds of inkjet printing ink products to about eighty countries. Since in 1992, we have been known as one of the research & development-oriented companies in inkjet printing industry. Unlike other ink suppliers who outsource ink products from outside, we design and manufacture various inks and related products with our own technology.

In order to meet customer's satisfaction, we always try to supply 'Total solution in Inkjet printing' such as Inkjet specialty media, a bulk ink system and printer parts. In addition, all of the InkTec staff have continuously devoted to developing diverse products with InkTec vision, "A World-class Leading Company in Inkjet Applications & Printed Electronics."

So, we can always provide high quality products and customized services to our valuable customers. Our integrated technology and stringent quality control ensure that the quality of InkTec products exceeds that of any counterparts on the market.



About SubliNova	2
SubliNova G7	6
SubliNova HI-LITE	8
SubliNova Sure	10
SubliNova Rapid	12
SubliNova Smart	14
SubliNova SENSIBLE	16



## The standard of Sublimation Ink, InkTec's SubliNova

'SubliNova' is the brand name of InkTec's dye sublimation ink. This name is derived from the words 'Sublimation' and 'Innovation'. Nova means 'new star', which reflects our desire to become a new star-player in the worldwide sublimation market.

SubliNova is easily recognisable as a sublimation ink whilst also highlighting the innovation that went into producing it. The blue logo is the corporate color of InkTec and using this keeps up our brand identity. The magenta symbolizes the modern futuristic nature of the SubliNova ink.

### FEATURES AND BENEFITS

- Particle structure stability
- Inks that perform exceptionally well in high speed printers
- Minimised friction through print heads
- Both direct and transfer printing
- High chromatic performances



## High performance digital sublimation ink

SubliNova offers vibrant colors when used for transfer printing of polyester textiles with excellent jetting performance.

## Excellent fastness properties

SubliNova shows excellent properties when used for printing polyester and poly-blend fabrics, with excellent wash and light fastness, resistance to acid & alkali perspiration and dry & wet crock fastness.

## Eco Friendly

SubliNova series are environmentally friendly products using only high-class dyes and its excellent quality has been proved by an international testing agency. All SubliNova series are free from formaldehyde, VOCs, Alkylphenol and compliance with RoHS.



### TEST RESULTS FOR ROHS FREE ROHS

All test results are 'Not detected', as authorised by SGS(<http://www.sgsgroup.kr/en>).

Color	Content	Cadmium(Cd)	Lead(Pb)	Mercury(Hg)	Hexavalent Chromium(Cr VI)
● Black		N.D.	N.D.	N.D.	N.D.
● Cyan		N.D.	N.D.	N.D.	N.D.
● Magenta		N.D.	N.D.	N.D.	N.D.
● Yellow		N.D.	N.D.	N.D.	N.D.

\* N.D : Not Detected



### TEST RESULTS FOR FORMALDEHYDE & VOCs(VOLATILE ORGANIC COMPOUNDS) FREE FORMALDEHYDE & VOCs

Formaldehyde and VOCs can cause serious health problems. All test results are 'Not detected', as authorised by SGS(<http://www.sgsgroup.kr/en>).

Color	Content	Formaldehyde	VOCs
● Black		N.D.	N.D.
● Cyan		N.D.	N.D.
● Magenta		N.D.	N.D.
● Yellow		N.D.	N.D.

\* N.D : Not Detected

## SUBLIMATION RANGE

SubliNova	G7	HI-LITE	Sure	Rapid	Smart	SENSIBLE
	Specially designed for Epson DX7 printhead	High color concentration	Specially designed for Epson TFP printhead	Extreme versatility	Suitable for transfer and direct printing	All the quality and performance at a cost effective price
<b>PRINthead</b>						
Epson DX7	○	○		○		
Epson DX5	○	○		○	○	○
Epson DX4					○	○
Epson 5113						○
Epson EPS3200, 4720						○
Epson TFP			○			

## TECHNICAL SERVICE



### PROVIDE ICC PROFILE

Our technicians will help you develop an ICC profile and provide you with the relevant color profile for SubliNova inks. The result : a perfect match, or even provide a full color management training.



### FIELD SERVICE

On-site technician performs preventative maintenance or repair service on printers currently installed with SubliNova inks. Our technicians will evaluate printer's condition and then identify and perform required service.



### TRANSFER PAPER



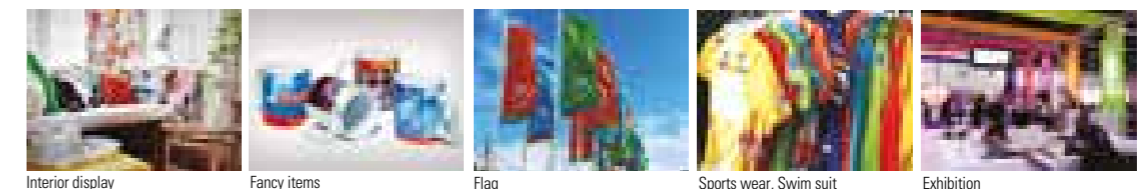
To supply a 'Total Solution' in the sublimation market, InkTec has been manufacturing and supplying the sublimation transfer paper to the world. With high quality and a competitive price, InkTec transfer papers have an excellent reputation in the global market.

### PRODUCT OFFERING

TYPE : STICKY, NON-STICKY  
SIZE : 36", 42", 50", 54", 60", 63"

## APPLICATION

Polyester and polyamide fabrics, spandex, lycra, nylon used in sports apparel and outdoor clothing  
Plastic substrates like skis, snowboards, skateboards and surfboards  
Mixed synthetic fabrics(used in sports apparel and outdoor clothing) with a minimum polyester content of 60%



# G7

## SubliNova G7

SubliNova G7 mainly targets for printers equipped with Epson DX7 printhead. The key feature of SubliNova G7 is the outstanding printability. It can be printed efficiently for longer hours in high-speed print mode to reduce production costs.

## Primary Features

- Suitable for the plotters equipped with Epson DX5, DX7, TFP printheads
- Multi-product lines
- All the quality and performance at a cost effective price(SEG Series)
- Superior print quality and stability at high speed mode
- Outstanding printability for longer hours
- Suitable for use with various transfer paper
- Received the International Oeko-Tex® Association's Eco Passport certification(SEG Series)
- Environmentally friendly : Free from formaldehyde, VOCs, Alkylphenol and compliance with RoHS

### PRINTER COMPATIBILITY

MUTOH VJ1624/ 1638  
MIMAKITS34-1800, JV33-130/ 160, JV150-130/ 160, JV300-130/ 160  
ROLAND XF640, RE640, FH740  
EPSON SC-F9300/ 9330/ 9340/ 9370/ 9380

### SHELF LIFE

SES: 12 months, SEG: 15 months

### PRODUCT OFFERING

**PACKING:**  
1L PACK, 2L PACK, 1L BOTTLE, 20L BOTTLE

### COLORS

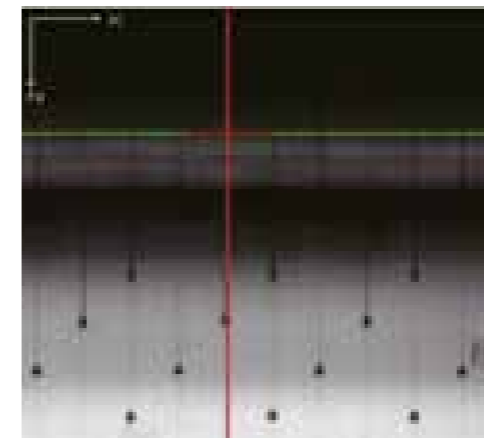


### TABLE OF FASTNESS PROPERTIES

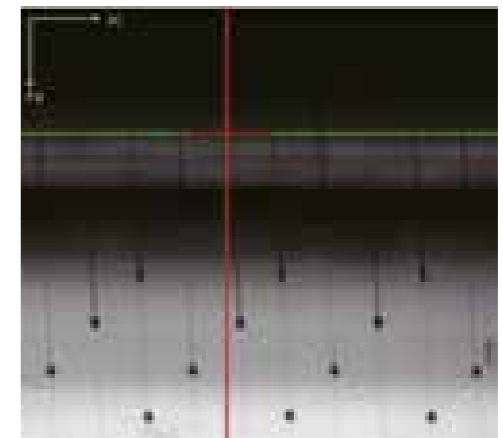
Content Color	Transfer Condition		Light Fastness ISO 105-B02(160h) Rating 1-7	Wash Fastness ISO 105-C06:2007(40°C) Rating 1-5	Alkali Perspiration Fastness ISO 105-E04:2010 Rating 1-5	Crock Fastness ISO 105-X 12:2001 Rating 1-5
	180°C/ 60sec	200°C/ 30sec				
● HD Black	180°C/ 60sec	200°C/ 30sec	4/5	4/5	4/5	4/5
● Cyan	180°C/ 60sec	200°C/ 30sec	4/5	4/5	4/5	4/5
● Magenta	180°C/ 60sec	200°C/ 30sec	7	4/5	4/5	4/5
● Yellow	180°C/ 60sec	200°C/ 30sec	7	4/5	4/5	4/5

### OUTSTANDING PRINTABILITY

Even running at high speeds for long periods of time the ink is guaranteed not to deflect and maintains its jetting straightness. This means less down-time for routine maintenance resulting in greater profitability and productivity.



SUBLINOVA G7



OTHERS INKS



# HI-LITE

## SubliNova HI-LITE

SubliNova HI-LITE is based on a high black and color density ink formula to be efficient with low production costs and is able to be printed onto any uncoated and coated light-weight transfer papers(50~70gsm) with fast drying time.

## Primary Features

- Suitable for the plotters equipped with Epson DX5, DX7 printheads
- High color concentration with vivid color
- Suitable for use with uncoated and coated light-weight transfer paper(50-70gsm)
- Efficient, with low production costs
- Superior print quality and stability at high speed mode
- Environmentally friendly : Free from formaldehyde, VOCs, Alkylphenol and compliance with RoHS

### PRINTER COMPATIBILITY

MUTOH VJ1604/ 1618/ 1638, RJ900  
MIMAKI JV5-130/ 160, JV33-130/ 160  
MIMAKI JV150-130/ 160, JV300-130/ 160  
ROLAND FH740

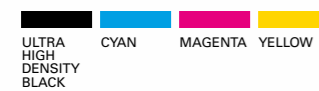
### SHELF LIFE

15 MONTHS

### PRODUCT OFFERING

PACKING:  
1L PACK, 2L PACK, 1L BOTTLE, 20L BOTTLE

### COLORS

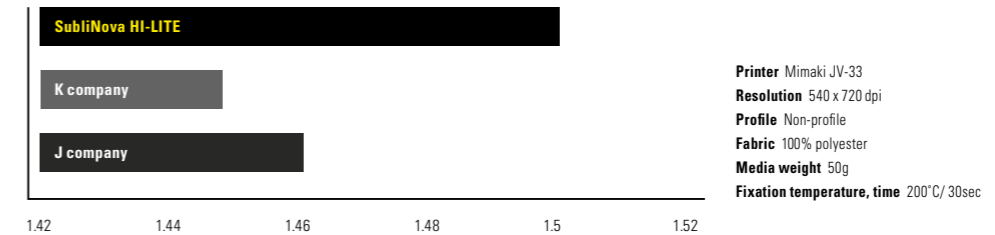


### TABLE OF FASTNESS PROPERTIES

Content	Transfer Condition		Light Fastness ISO 105-B02:1994(160h) Rating 1-7	Wash Fastness ISO 105-C06:2010(40°C) Rating 1-5	Alkali Perspiration Fastness ISO 105-E04:2013 Rating 1-5	Crock Fastness ISO 105-X 12:2001 Rating 1-5
● <b>UHD Black</b>	180°C/ 60sec	200°C/ 30sec	4/5	4/5	4/5	4/5
● <b>Cyan</b>	180°C/ 60sec	200°C/ 30sec	4/5	4/5	4/5	4/5
● <b>Magenta</b>	180°C/ 60sec	200°C/ 30sec	6	4/5	4/5	4/5
● <b>Yellow</b>	180°C/ 60sec	200°C/ 30sec	7	4/5	4/5	4/5

### BLACK OPTICAL DENSITY

SubliNova HI-LITE has a special black, called “UHD black” which means Ultra High Density black and its optical density is higher than black inks from competitors. The higher the figures, the deeper the optical density.



### EFFICIENT, WITH LOW PRODUCTION COSTS

SubliNova HI-LITE is based on high black and color density ink formula to be efficient with low production costs, saving up to 23% compare to other inks. The data of ink consumption below is tested on Mimaki JV-33 with 540 x 720dpi, Bi, 4Pass option, printing up to 10 sqm for each color.

Color	Content	SubliNova HI-LITE	Other inks	Rate of ink saving
● <b>UHD Black</b>		0.123 ℓ	0.167 ℓ	26%
● <b>Cyan</b>		0.135 ℓ	0.172 ℓ	22%
● <b>Magenta</b>		0.114 ℓ	0.142 ℓ	20%
● <b>Yellow</b>		0.144 ℓ	0.184 ℓ	22%

Printer Mimaki JV-33  
Resolution 540 x 720dpi, Bi, 4Pass  
Profile Non-profile  
Media weight 50g

# Sure

## SubliNova Sure

SubliNova Sure is based on a high black and color density ink formula to be efficient with low production costs. SubliNova Sure shows optimal printing stability and long lasting head performance and is formulated to be compatible with Epson TFP head. Moreover, it maintains the quality under the high speed option(360X720dpi, 1pass, 58.9m<sup>2</sup>/h) of Epson SC-F7000.

## Primary Features

- Suitable for the plotters equipped with Epson TFP printhead
- Wider color gamut than original inks
- High color concentration with vivid color
- Superior print quality and stability at high speed mode
- Environmentally friendly :  
Free from formaldehyde, VOCs, Alkylphenol and compliance with RoHS

### PRINTER COMPATIBILITY

EPSON SURECOLOR F6000/ F7000  
EPSON SURECOLOR T7000  
EPSON STYLUS PRO 9700

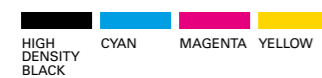
### SHELF LIFE

15 MONTHS

### PRODUCT OFFERING

PACKING:  
1L BOTTLE, 20L BOTTLE

### COLORS

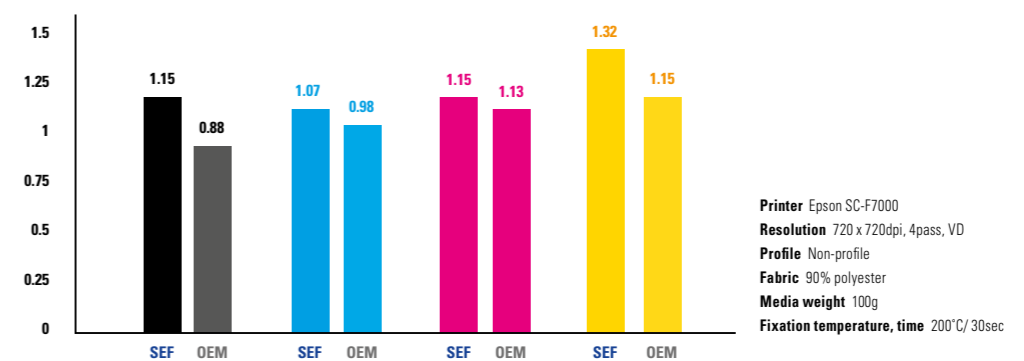


### TABLE OF FASTNESS PROPERTIES

Content	Transfer Condition		Light Fastness ISO 105-B02:1994(160h) Rating 1-7	Wash Fastness ISO 105-C06:2010(40°C) Rating 1-5	Alkali Perspiration Fastness ISO 105-E04:2013 Rating 1-5	Crock Fastness ISO 105-X 12:2001 Rating 1-5
● HD Black	180°C/ 60sec	200°C/ 30sec	5/6	4/5	4/5	4/5
● Cyan	180°C/ 60sec	200°C/ 30sec	4/5	4/5	4/5	4/5
● Magenta	180°C/ 60sec	200°C/ 30sec	6	4/5	4/5	4/5
● Yellow	180°C/ 60sec	200°C/ 30sec	7	4/5	4/5	4/5

### BLACK & COLOR OPTICAL DENSITY

The color concentration of SubliNova Sure is high with vivid color and its optical density is much higher than original inks. The higher the figures, the deeper the optical density.



# Rapid

## SubliNova Rapid

SubliNova Rapid is specially formulated to suit printers equipped with the DX7 printhead, which have faster printing speeds, in company with the DX5 printhead. It guarantees a smooth, high quality output, with a wide color gamut on each and every print.

## Primary Features

- Suitable for the plotters equipped with Epson DX5, DX7 printheads
- Superior print quality and stability at high speed mode
- Compatible with a broad range of transfer paper
- Superior fastness properties
- Fast drying time on transfer paper
- Environmentally friendly :  
Free from formaldehyde, VOCs,  
Alkylphenol and compliance with RoHS

### PRINTER COMPATIBILITY

MUTOH VJ1604/ 1618/ 1638, RJ900  
MIMAKI JV5-130/ 160, JV33-130/ 160  
ROLAND XF640/ FH740

### SHELF LIFE

12 MONTHS

### PRODUCT OFFERING

PACKING:  
1L PACK, 1L BOTTLE, 20L BOTTLE

### COLORS



### TABLE OF FASTNESS PROPERTIES

Content Color	Transfer Condition		Light Fastness	Wash Fastness	Alkali Perspiration	Crock Fastness
	180°C/ 60sec	200°C/ 30sec	ISO 105-B02:2010(160h) Rating 1-7	ISO 105-C06:2012(40°C) Rating 1-5	ISO 105-E04:2010 Rating 1-5	KS K 0650:2011 Rating 1-5
● Black	180°C/ 60sec	200°C/ 30sec	7	4/5	4/5	4/5
● Cyan	180°C/ 60sec	200°C/ 30sec	4	4/5	4/5	4/5
● Magenta	180°C/ 60sec	200°C/ 30sec	5	4/5	4/5	4/5
● Yellow	180°C/ 60sec	200°C/ 30sec	7	4/5	4/5	4/5

### QUICK DRYING

SubliNova Rapid ink dries instantly to enable you to fold or handle the transfer sheets without fear of smudging.

### SUBLINOVA RAPID

60 seconds after printing



Printer Mimaki JV33  
Resolution 540 x 720dpi, Bi, 4Pass  
Media weight 100g

### OTHER INKS

60 seconds after printing





# Smart

## SubliNova Smart

SubliNova Smart can be used with both direct printing on fabrics and traditional heat transfer process with transfer paper. It has superior printing quality in various printing environments as well as jetting stability in long term printing with various printers on the market.

## Primary Features

- Suitable for the plotters equipped with Epson DX4, DX5 printheads
- Fast drying time on transfer paper
- Enhanced productivity
- Universal for both direct and transfer printing
- Intense and vibrant colors
- Superior fastness properties
- Received the International Oeko-Tex® Association's Eco Passport certification
- Environmentally friendly : Free from formaldehyde, VOCs, Alkylphenol and compliance with RoHS

### PRINTER COMPATIBILITY

MIMAKI JV4-130/ 160/ 180, JV22, JV33-160A  
 ROLAND FP740/ FJ740  
 ROLAND HI-FI JET PRO II 540/ 640/ FJ500/ FJ600  
 MUTOH VJ1604/ 1614PRO(AQUA)-AVAILABLE W/O CARD CHIP  
 MUTOH RJ900/ 900C/ VJ1204/ VJ1304  
 MUTOH FALCON RJ8000 SERIES/ RJ8100  
 EPSON STYLUS PRO 4000/ 7000/ 7400/ 7600/ 7800/ 7880/ 9000  
 EPSON STYLUS PRO 9400/ 9500/ 9600/ 9800/ 9880  
 LLB ONLY FOR EPSON STYLUS 4880/ 4800/ 7890

### SHELF LIFE

24 MONTHS

### PRODUCT OFFERING

#### PACKING:

1L PACK, 2L PACK, 1L BOTTLE, 20L BOTTLE

### COLORS



### TABLE OF FASTNESS PROPERTIES

Content Color	Transfer Condition		Light Fastness ISO 105-B02:1994(160h) Rating 1-7	Wash Fastness ISO 105-C06:2007(40°C) Rating 1-5	Alkali Perspiration Fastness ISO 105-E04:2010 Rating 1-5	Crock Fastness ISO 105-X 12:2001 Rating 1-5
	180°C/ 60sec	200°C/ 30sec				
● Black	180°C/ 60sec	200°C/ 30sec	5	4/5	4/5	4/5
● Cyan	180°C/ 60sec	200°C/ 30sec	4/5	4/5	4/5	4/5
● Magenta	180°C/ 60sec	200°C/ 30sec	7	4/5	4/5	4/5
● Yellow	180°C/ 60sec	200°C/ 30sec	7	4/5	4/5	4/5

### QUICK DRYING

SubliNova Smart ink dries instantly to enable you to fold or handle the transfer sheets without fear of smudging.

#### SUBLINOVA SMART

60 seconds after printing



Printer Mimaki JV33  
 Resolution 540 x 720dpi, Bi, 4Pass  
 Media weight 100g

#### OTHER INKS

60 seconds after printing



# SENSIBLE

## SubliNova SENSIBLE

InkTec SubliNova SENSIBLE inks are formulated to ensure stable printing for printers equipped with the DX4, DX5, 5113, EPS3200, 4720 printheads. It is perfect for heavy users, while delivering high quality output at an affordable price and ensuring a long and stable print reliability with the Epson 5113, EPS3200, 4720 printheads.

## Primary Features

- Long and stable print reliability with the 5113, EPS3200, 4720 printheads
- All the quality and performance at a cost effective price
- Intense and vibrant colors
- Received the International Oeko-Tex® Association's Eco Passport certification
- Environmentally friendly: Free from formaldehyde, VOCs, Alkylphenol and compliance with RoHS

### PRINTER COMPATIBILITY

MIMAKI JV4-130/ 160/ 180, JV22, JV33-160A  
 ROLAND FP740/ FJ740  
 ROLAND HI-FI JET PRO II 540/ 640/ FJ500/ FJ600  
 MUTOH VJ1604/ 1614PRO(AQUA)-AVAILABLE W/O CARD CHIP  
 MUTOH RJ900/ 900C/ VJ1204/ VJ1304  
 MUTOH FALCON RJ8000 SERIES/ RJ8100  
 PRINTERS EQUIPPED WITH THE  
 EPSON 5113, EPS3200, 4720 PRINTHEADS

### SHELF LIFE

15 MONTHS

### PRODUCT OFFERING

PACKING:  
 1kg PACK, 1kg BOTTLE, 20kg BOTTLE

### COLORS

HIGH DENSITY BLACK    BLACK    CYAN    MAGENTA    YELLOW



TABLE OF FASTNESS PROPERTIES

Content Color	Transfer Condition		Light Fastness ISO 105-B02:2010(160h) Rating 1-7	Wash Fastness ISO 105-C06:2012(40°C) Rating 1-5	Alkali Perspiration Fastness ISO 105-E04:2010 Rating 1-5	Crock Fastness KS K 0650:2011 Rating 1-5
	180°C/ 60sec	200°C/ 30sec				
● Black	180°C/ 60sec	200°C/ 30sec	7	4/5	4/5	4/5
● Cyan	180°C/ 60sec	200°C/ 30sec	4	4/5	4/5	4/5
● Magenta	180°C/ 60sec	200°C/ 30sec	5	4/5	4/5	4/5
● Yellow	180°C/ 60sec	200°C/ 30sec	7	4/5	4/5	4/5