



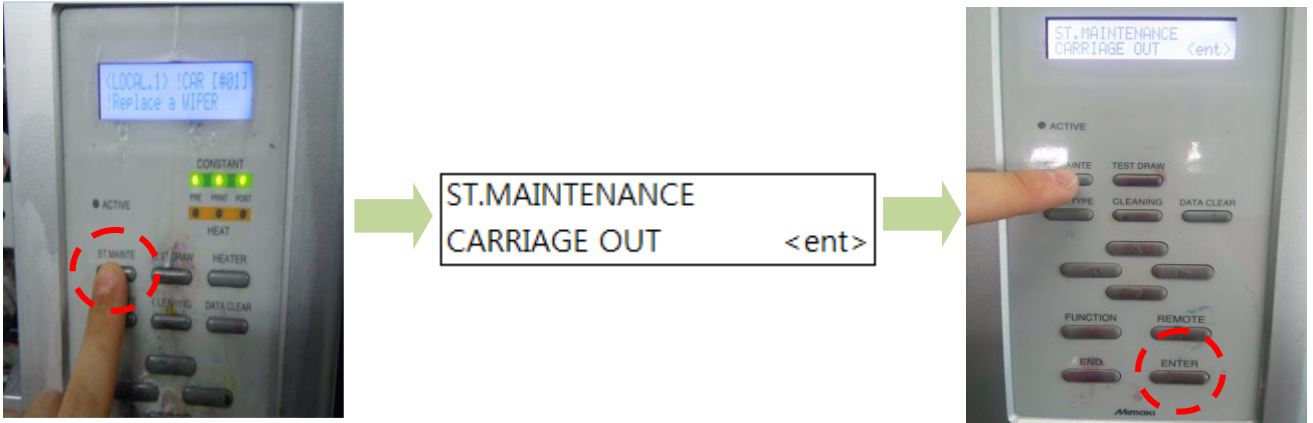
Mimaki JV33-160A Printer



**InkTec SubliNova Ink User
Monthly Maintenance Guide**

Step 1. : Move the Head Carriage

Please follow the instruction below to move the head carriage.



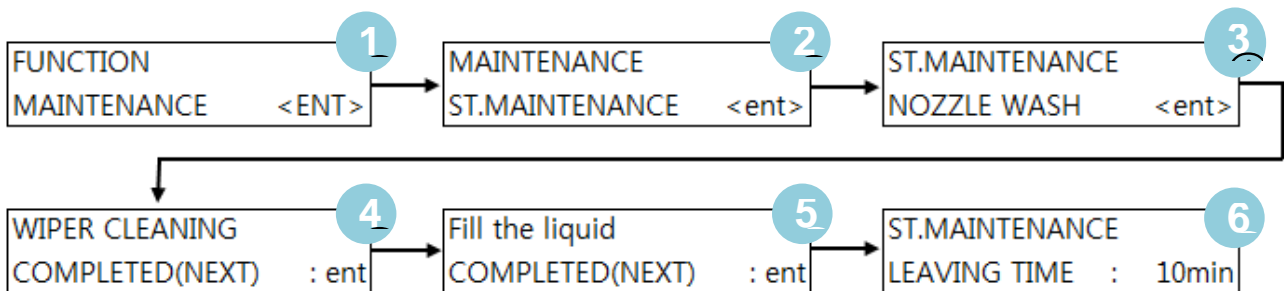
Step 2. : Cleaning the edge of a head

After the head carriage is moved to the left, Coat the cotton bud or cleaing stick with SWA to clean the plate around head.

* If the heads are not cleaned regularly the condition will deteriorate.

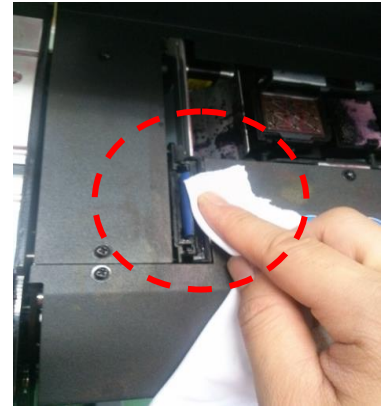


Step 3. : NOZZLE WASH

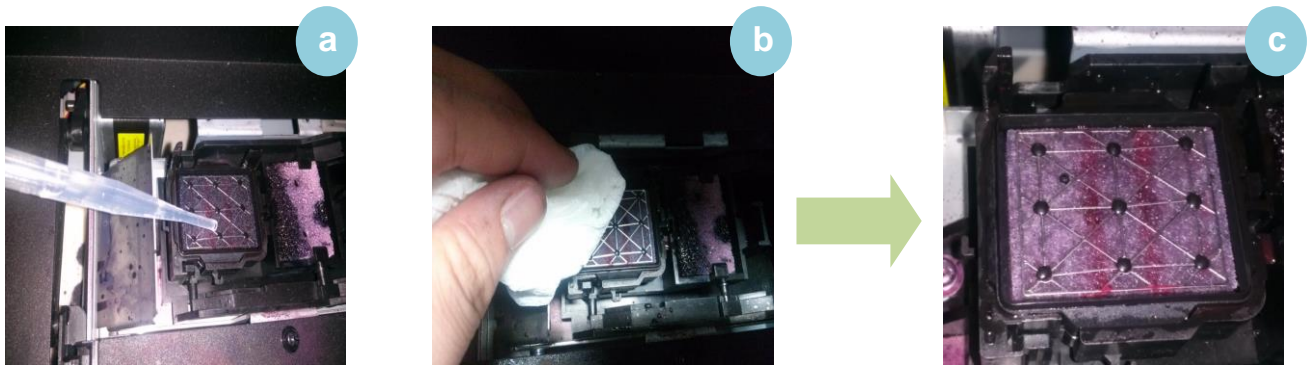


At ④ step, coat the tissue paper with SWA and clean the front and back of the wiper.

* If the wipers are not cleaned regularly the nozzles can't be recovered even after cleaning.



At ⑤step, Drop SWA down into the CAP (Ⓐ) and wipe it (Ⓑ) to clean the CAP (Ⓒ).

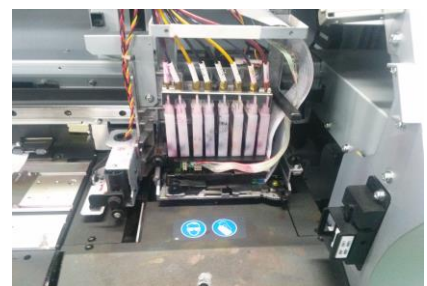


* If the CAP is not cleaned regularly, the drainage line can become clogged

After finishing the CAP clean, pour SWA into top of the CAP until full.



At ⑥step, set the wash time for ten minutes, and click enter to perform the nozzle wash.



Step 4. Cleaning the Head Nozzle

Coat the superfine fibre cloth (lint free) to clean the nozzles.
Wipe every nozzles up and down for ten minutes.

* **Note** : Do not wipe too hard because it can damage
The Nozzles



Step 5. Checking the nozzle

| |
|-----------------------------------|
| ST.MAINTENANCE COMPLETED : ent |
|-----------------------------------|

Push enter key to return the head carriage where it was.
Perform cleaning cycle and check the nozzles.

