



# Mutoh VJ-1638W Printer



InkTec SubliNova Ink User  
Ink Change Guide

# **i** How to replace an ink cartridge for MUTOH Printers.

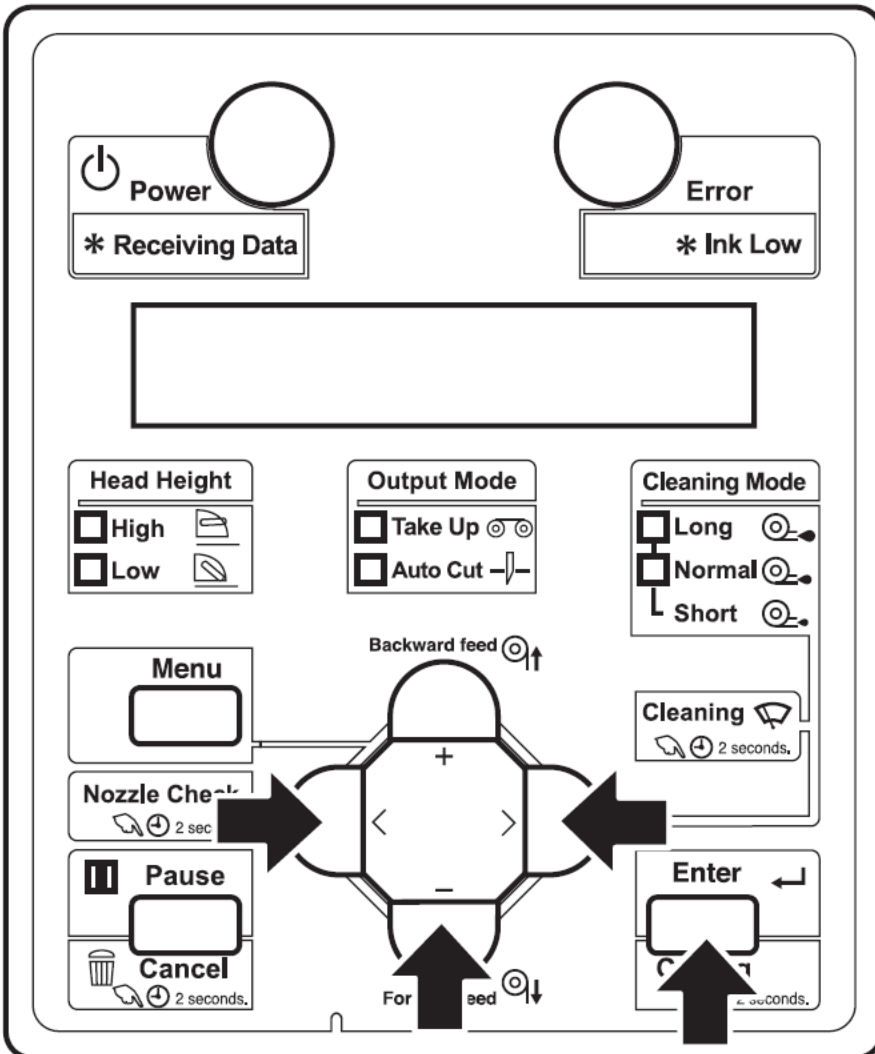
Please follow the instructions below to replace an ink cartridge.

## Step 1.

Power off the printer and install the cleaning solution to the cartridge slot.

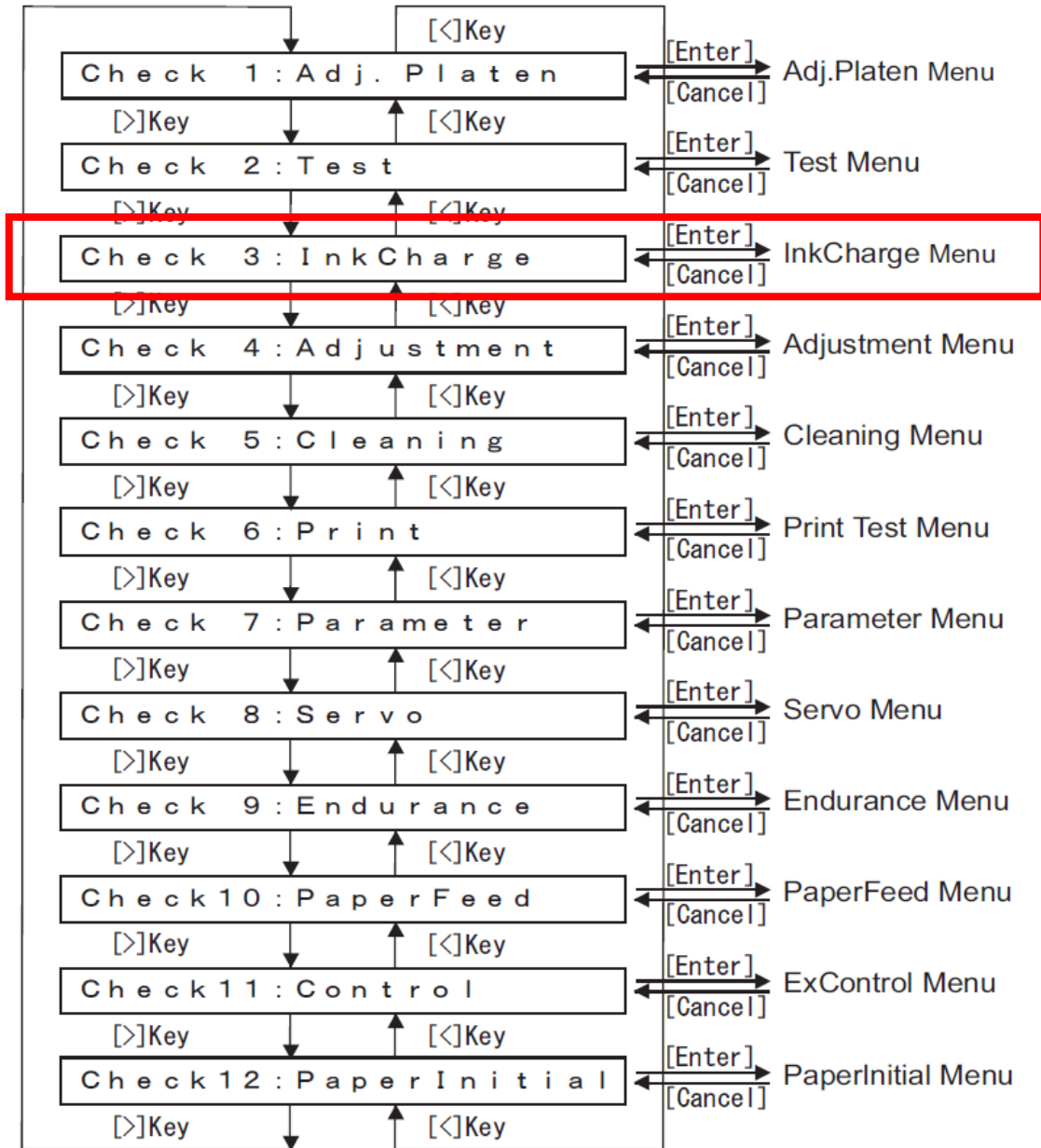
## Step 2.

Power on the printer while pressing arrow keys as the picture, and run the self-diagnosis menu.



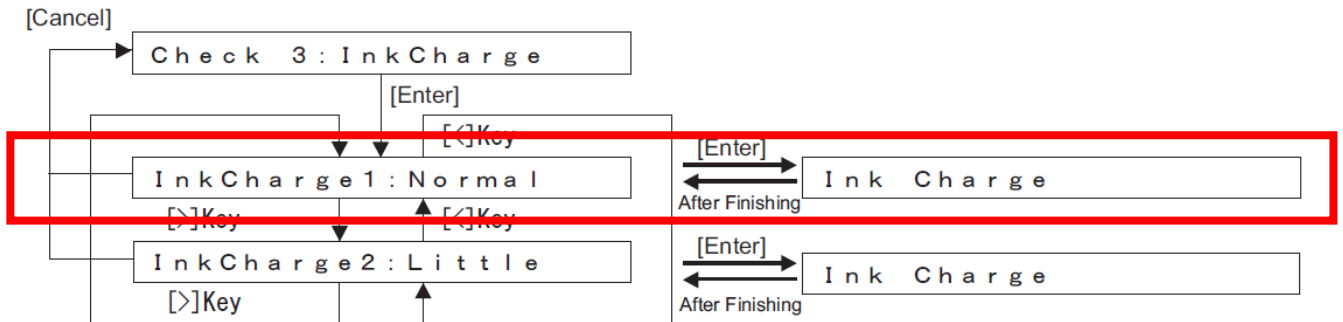
### Step 3.

Run 'Ink Charge1 : Normal' two times in 'Check 3 : InkCharge' of self-diagnosis menu.



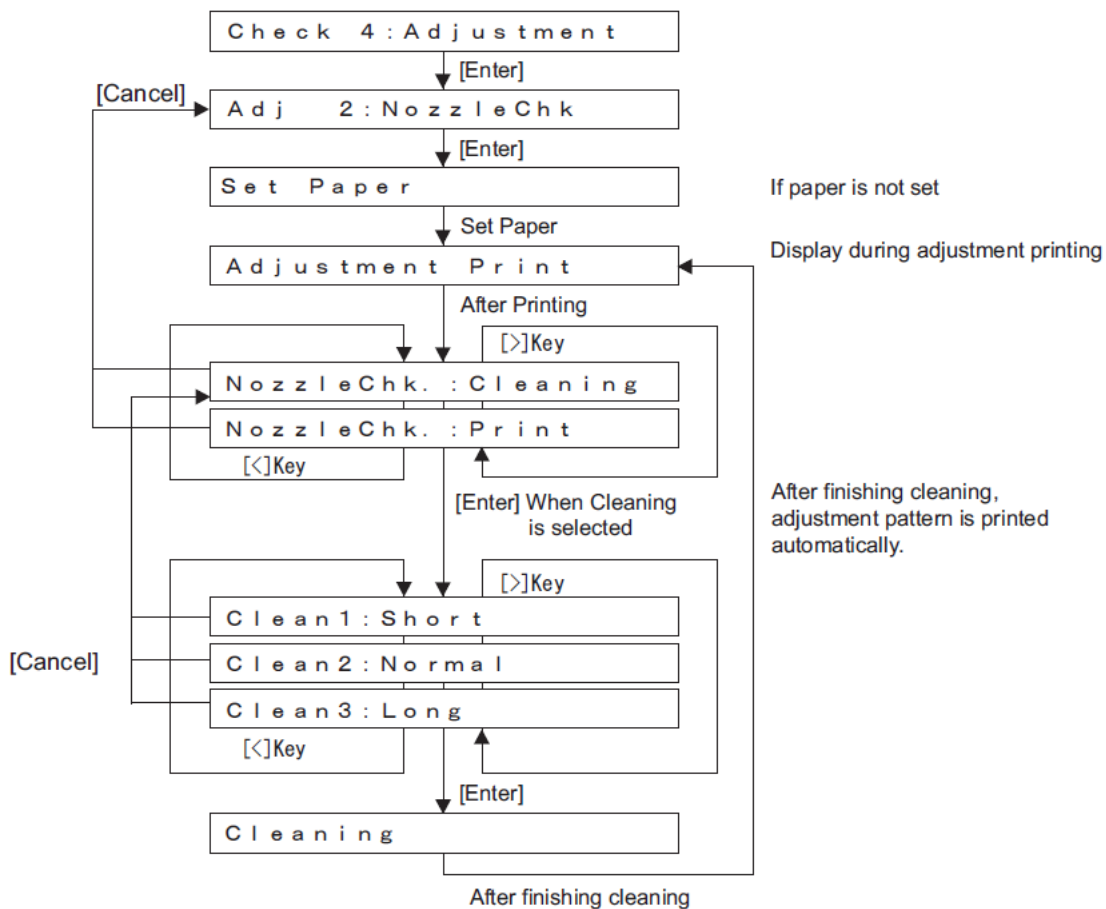
## Step 4.

Install the cartridge which you wish to replace, and run two times Ink Charge1: Normal as #3



## Step 5.

Check nozzles by running Head Nozzle Check from Check 4: Adjustment menu. If it needs cleaning, follow the below process until nozzles status are in good condition.



## Step 6.

After checking result of nozzle test, power off the printer first and power on the printer again to use.

