

EXCEPTIONAL COLOUR SATURATION FRONT PRINT MATTE BACKLIT FILM

COMPATIBLE WITH SOLVENT, LATEX & UV INKS

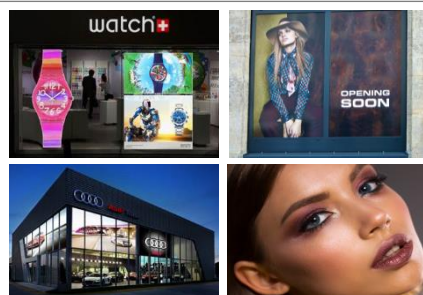
Product description

- A matte coated heavy weight polyester backlit display film for use in light box applications
- Front print matte finish diffusion coating produces high quality vibrant print results
- High-speed drying and universal compatibility for Solvent based, Latex and UV inks
- Very durable handling and finishing characteristics, exceptional colour saturation with a quick dry time

Specifications

Length	30m	Inner Core	3"
Weight	285gsm	Surface	Matte
Caliper	210 μ m	Base Material	100% Polyester

Uses



Indoor & outdoor retail backlit, illuminated signage, trade shows and high quality cosmetic & fashion applications

Printing and handling

- Recommended conditions for use: 10~30°C / 30~65% RH
- To optimize the printing quality, printer needs to be set for highest print quality
- Lamination is optional but can help protect the image from physical damage and to decrease image-fading
- Allow image to dry completely prior to handling and laminating
- One year storage in original package under recommended temperature 10°~25°C, 30~ 50% RH

Application tips

- When printing with Latex 300 Series printers it is recommended to set the appropriate pass and heating temperatures, this will ensure that there are no material deformation or drying issues
- It is recommended to test prior to use, samples are available, please contact us for details



**Important information: It is the responsibility of the purchaser to test and determine the suitability of the material. Printer and ink change may affect results. Information provided here is subject to our test criteria and subject to change without prior notice. No media warranty is implied.*

01993 862770 | info@inkteceu.com | www.inkteceu.com