

EASY TO APPLY, REMOVE & REUSABLE SILICONE ADHESIVE WHITE PET FILM

COMPATIBLE WITH LATEX, SOLVENT, ECO SOLVENT & UV INKS

Product description

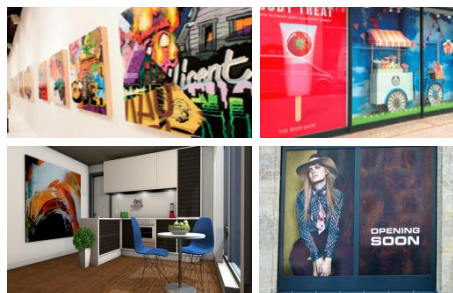
- White polyester film with silicone adhesive for indoor window decoration
- High quality image reproduction with outstanding colour spectrum
- Repositionable and removable without leaving a residue
- Suitable for front and reverse printing
- **HP LATEX profiled**

Natura
MAKE A DIFFERENCE

Specifications

Length	30m	Inner Core	3"
Weight	240gsm	Surface	Semi-Matte
Caliper	190µm	Base Material	100% white polyester

Uses



Window decorations, glass, window graphics, retail window advertising

Printing and handling

- Printing Temp: Temperature 15 ~ 30°C (59 ~ 86°F) / Humidity 30 ~ 60%
- Lamination: Optional
- Shelf Life: One year, stored in original packing at recommended temperature
- Caution should be taken when printing with Latex & UV inks, as excess heat can affect the stability of the film & coating

Application tips

- It is recommended to test a sample before you use the film on your final job
- Clean the surface before applying this film
- Before printing it is recommended to handle with gloves to avoid marks during printing
- It is recommended to use wet application when mounting graphics over 0.5m²
- Not suitable for textured surfaces or outdoor use

InkTec Europe

**Important information: It is the responsibility of the purchaser to test and determine the suitability of the material. Printer and ink change may affect results. Information provided here is subject to our test criteria and subject to change without prior notice. No media warranty is implied.*

01993 862770 | info@inkteceu.com | www.inkteceu.com